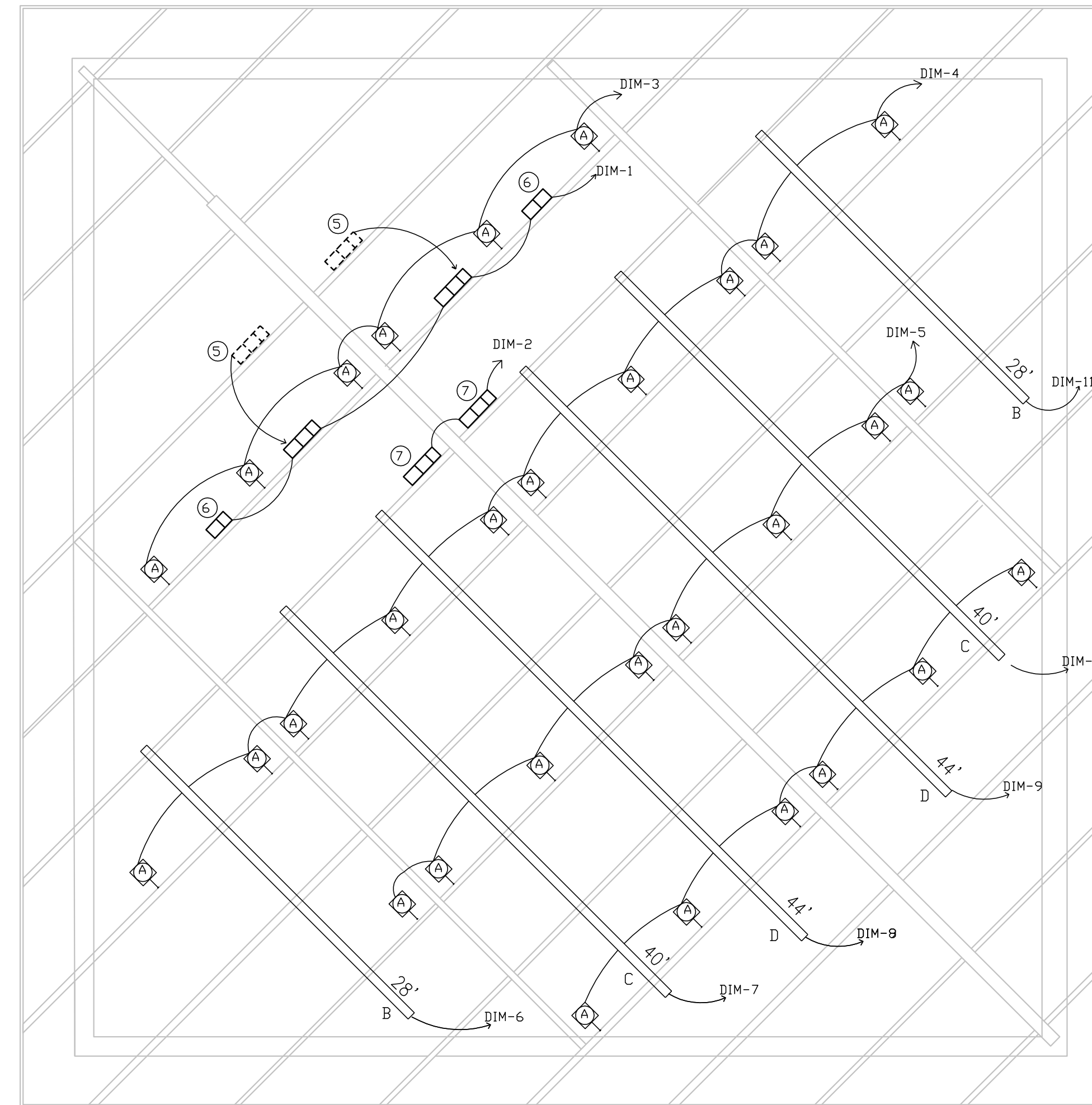
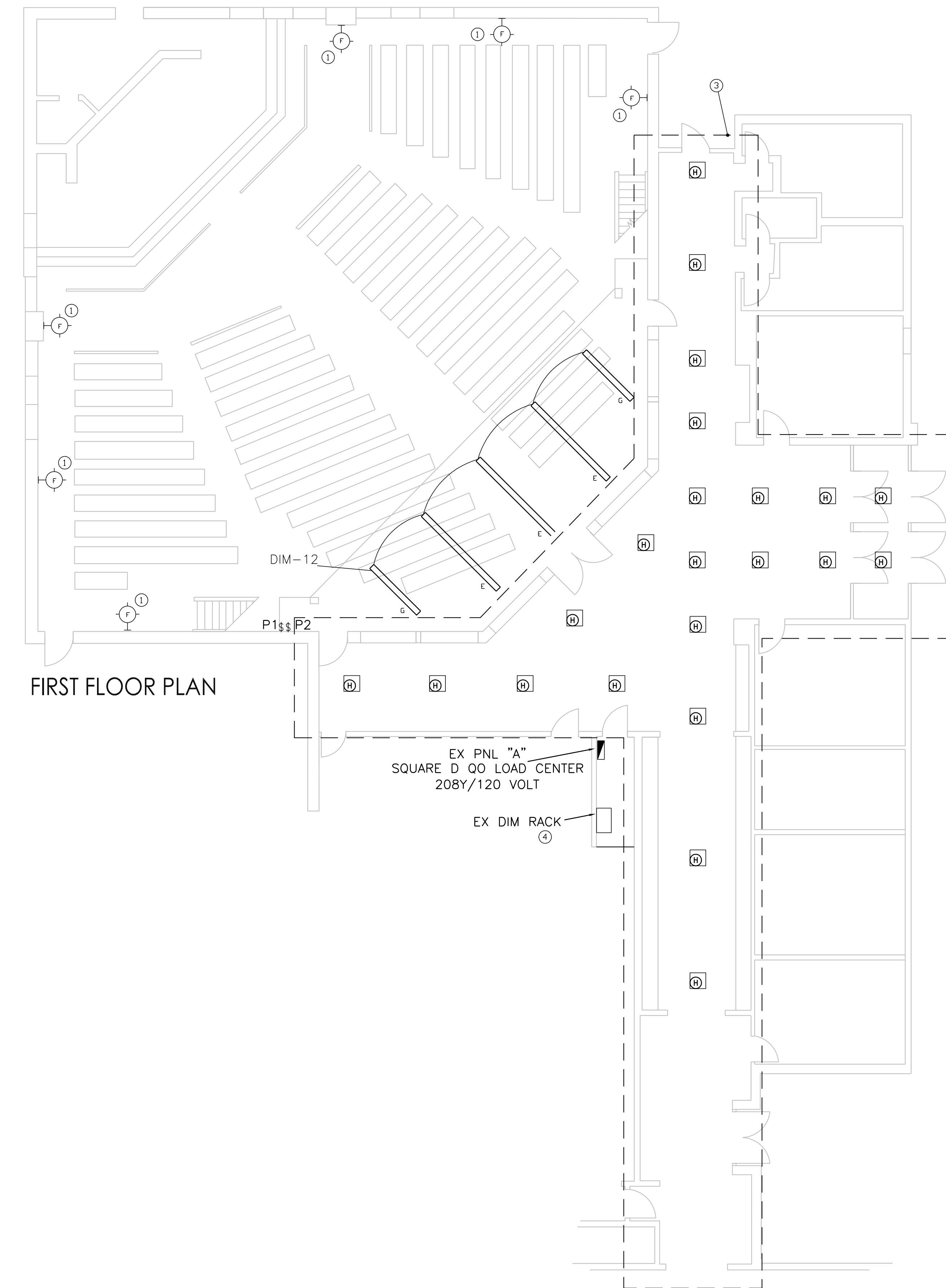


BALCONY FLOOR PLAN



UPPER CEILING-LIGHTING PLAN



FIRST FLOOR PLAN

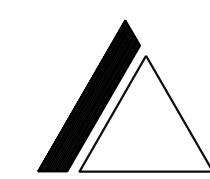
ELECTRICAL NOTES:

- ① REMOVE EXISTING WALL SCENE AND REPLACE WITH NEW FIXTURE. RECIRCUIT TO NEW DIMMING SYSTEM ZONE DIM-13.
- ② EXISTING BACK LIT CROSS. REMOVE EXISTING INCANDESCENT LAMPS AND REPLACE EVERY OTHER LAMP WITH PHILLIPS #9290002290 22 WATT, A21 LED LAMP (QTY. 20). REPLACE EXISTING SWITCH WITH WIRELESS DIMMER (SEE LIGHTING CONTROL RISER DIAGRAM).
- ③ ALTERNATE BID E-1 - REPLACE EXISTING DOWN LIGHTS WITH NEW FIXTURES AS SHOWN. REVISE EXISTING CIRCUITS AND CONTROLS.
- ④ EXISTING ELECTRO CONTROLS DIMMER RACK TO BE REMOVED AND REPLACED WITH NEW PANEL "DIM". REVISE EXISTING 3P/60A. CIRCUIT BREAKER IN PANEL "A" TO FEED NEW PANEL. PANEL SHALL BE SQUARE D, 100 AMP, 208Y/120V QO LOAD CENTER WITH (20) 20A-1P CIRCUIT BREAKERS.
- ⑤ EXISTING MANNING (3) LIGHT SPATIALITE TO BE REMOVED AND REINSTALLED ONE BREAM FURTHER BACK. PROVIDE MANNING # GCR-064 LED RETROFIT FOR EACH LAMP SECTION. RECIRCUIT TO NEW DIMMING PANEL.
- ⑥ EXISTING MANNING (2) LIGHT SPATIALITE TO BE RETROFITTED WITH MANNING # GCR-064 LED RETROFIT FOR EACH LAMP SECTION. RECIRCUIT TO NEW DIMMING PANEL.
- ⑦ EXISTING MANNING (3) LIGHT SPATIALITE TO BE RETROFITTED WITH MANNING # GCR-064 LED RETROFIT FOR EACH LAMP SECTION. RECIRCUIT TO NEW DIMMING PANEL.

GENERAL NOTES:

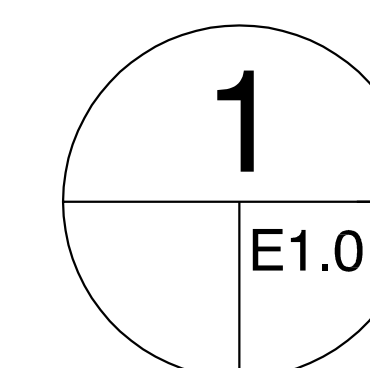
- Ⓐ REMOVE ALL EXISTING SURFACE LIGHT FIXTURES ON UNDERSIDE OF BALCONY. PROVIDE PAINTED BLANK COVER PLATE AT ALL BOX LOCATIONS.
- Ⓑ WIRING FOR NEW CEILING MOUNTED LIGHTS SHALL BE VIA SURFACE MOUNTED CONDUIT INSTALLED ON "BACK" SIDE OF WOOD BEAMS TO HIDE FROM AUDIENCE VIEW WHERE POSSIBLE. CONDUIT TO BE INSTALLED WEATLY AND PAINTED BLACK.
- Ⓒ EXISTING EMERGENCY & EXIT LIGHTS ARE TO REMAIN.
- Ⓓ REMOVE ALL EXISTING PENDANT LIGHT FIXTURES. PROVIDE PAINTED BLANK COVER PLATE AT ALL BOX LOCATIONS.

JULY 29, 2015



DOLAN & DUSTIN, INC.
CONSULTING ELECTRICAL ENGINEERS
1011 N. MAYFAIR ROAD, SUITE 206
WAUWATOSA, WI 53226-3448
TEL: 414-774-4543
FAX: 414-774-4579

**ST. JOHN'S LUTHERAN
BURLINGTON**



LIGHTING PLANS BY LEVEL

SCALE: 1/8" = 1'-0"